



Our Community of Homes

AGM 2018

OUR CHISEL COMMUNITY



CHISEL Housing association is responsible for 245 properties in South East England situated in Brighton, Colchester, Lewisham, Greenwich and Croydon in south east London

- There are a mixture of property types; new build flats, old flats in divided houses, timber framed houses build by the tenants, some purpose built bungalows.
- Plus a number of tall old terraced houses. Some homes have shared gardens or outdoor courtyards or private balconies. Some of the self builds have grass roofs.



Who lives in CHISEL's Homes?

There is too a variety of people housed in CHISEL's homes, of all ages creating a diverse community of tenants. There are homes of 3 to 6 people sharing, each with their own tenancy for their room and use of communal kitchen, living and bath rooms. CHISEL also houses single people & couples too in self contained accommodation, alongside homes with adult family groups and those with children.



All of CHISEL Schemes & Individual Properties

The Diggers, 9 houses, North Brighton

Deptford High Street, 20 Flats, North Lewisham

Deptford Church St, 10 Flats, with shared courtyard entrance, Lewisham

Dryad Housing Co-op , 11 houses, North Brighton

Flamenco Coop, 3 houses, 6 shared flats with gardens, New Cross Gate, Lewisham

Greenstreet Residents' Association, 11 Houses, communal gardens, Brockley, Lewisham

Lowther Hill, 4 Houses, South Lewisham

Marrons Way, 5 houses and 6 flats, Sedge Hill, Lewisham

Nubia Way, 13 houses, South Lewisham

Roxborough, 5 Adapted Bungalows, Chelmsford, Suffolk managed by the local Colne Housing Association

Three Boroughs Housing Co-operative, manage 21 CHISEL properties, on the Pepys Estate, Lewisham

Tarrif Crescent, flats on the Pep's Estate

Parish Wharf, se

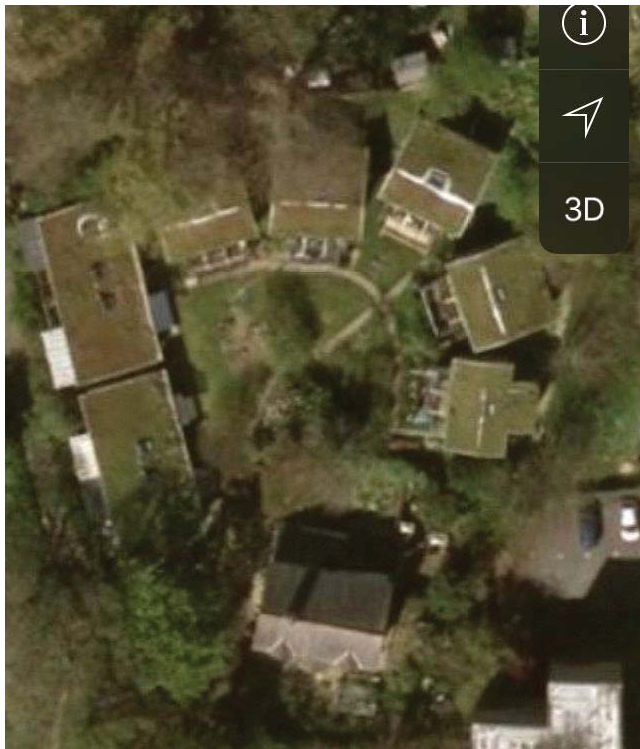
Silver Birch Close & Birch Dean Close, self build houses, Woolwich, Greenwich

Individual properties in Catford, Hilly fields, Beckenham and Croydon



The Diggers: 9 Homes in north Brighton

The Diggers homes were built
25 years ago as part of
a self build scheme



Designed and built by the tenants. Most of the original builders still live in their homes – the remaining houses are now enjoyed by new tenants.



The Diggers today



Dryad Coop: 11 Houses in Brighton, recently joined CHISEL



Flamenco Housing Cooperative : 6 Flats in 3 Victorian terraced houses, New Cross Gate Lewisham



- **Flamenco formed in the 1990s. As shared housing for single people, they manage their own allocations**

Forest Hill – Belmont and McLellan Houses managed by CHISEL for Clarion HA



Silver Birch & Birchdene, Woolwich 12 timber clad, semi and terraced houses – Homes for 12 families



Silver Birch & Birchdene



Silver Birch Close finished building their homes in 1995



11 varied sized Houses at Greenstreet in Brockley, Lewisham

The original Greenstreet self builders started meeting in the late 1980s to plan grant application and how to build a community .

- They received their grant after 4 years of application to the then Housing Corporation. They built their homes from scratch; digging the foundations to raising each frame themselves. Starting in 1994 and finishing building 21 years ago in 1997.
- Each house designed by the first occupants, many of them still in residence today. 3 of the 11 homes at Greenstreet have new tenants.



Greenstreet Residents' Association

2 single sharer houses,
5 houses with grown up children,
5 teenagers, lots of
grandchildren running around,
residents with a variety of careers although
a few have retired over the last few years;
from nursery staff, nhs staff, beauty therapists,
teachers, bus driver, decorators,
civil service, carpenter, electrician,
bike mechanic, artist and chef



All of Greenstreet's gardens are communal, designed & tended by the residents



Roxborough 5 Self Build homes – specially adapted bungalows, Marks Tey, near Colchester in Suffolk



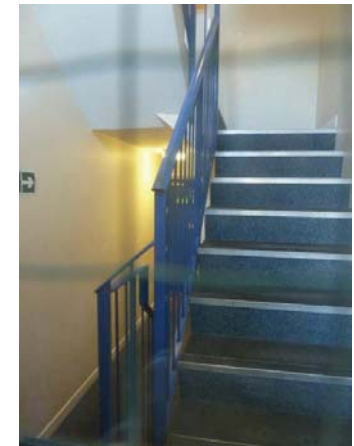
Roxborough: the first housing project for disabled self builders



Roxborough finished building in 1994



Deptford: 9 flats on the High Street and 6 on Church Street Lewisham



Tariff Crescent : Flats on the Deptford Pepys Estate in North Lewisham next to the river



Some of CHISEL's many Individual Street Properties



The individual street properties are situated in Hilly fields, Catford, Beckenham, Lewisham, Greenwich and Sedge Hill



Nubia Way: 13 Houses, self built in the 1980s and 90s



Nubia Way: Built in the Walter Segal Method with grass roofs and half sheet, half timber cladding



Brockley Park: Self build homes built by Fusions Jameen Coop



Lowther Hill: 4 self build houses



Parish Wharf: 8 self build houses at Woolwich Dock Yard

